

**“MIAMI RIVER BASIN WATER QUALITY IMPROVEMENT REPORT”
Action Item Matrix Quarterly Progress Report**

First Quarterly Report, 2025
(October – December 2024)

Action Item:

- 4. Monitoring and Research
 - a. Continue monthly monitoring for water quality of Wagner Creek, Miami River, and adjoining Biscayne Bay

Lead Agency: Miami-Dade County Regulatory and Economic Resources, Division of Environmental Resources Management (DERM)

Contact Names Pamela Sweeney or Juliet Ruggiero, DERM

Address 701 NW 1st Court
Miami, FL 33136

Telephone (305) 372-6594 or (786) 452-5699

Fax (305) 372-6649

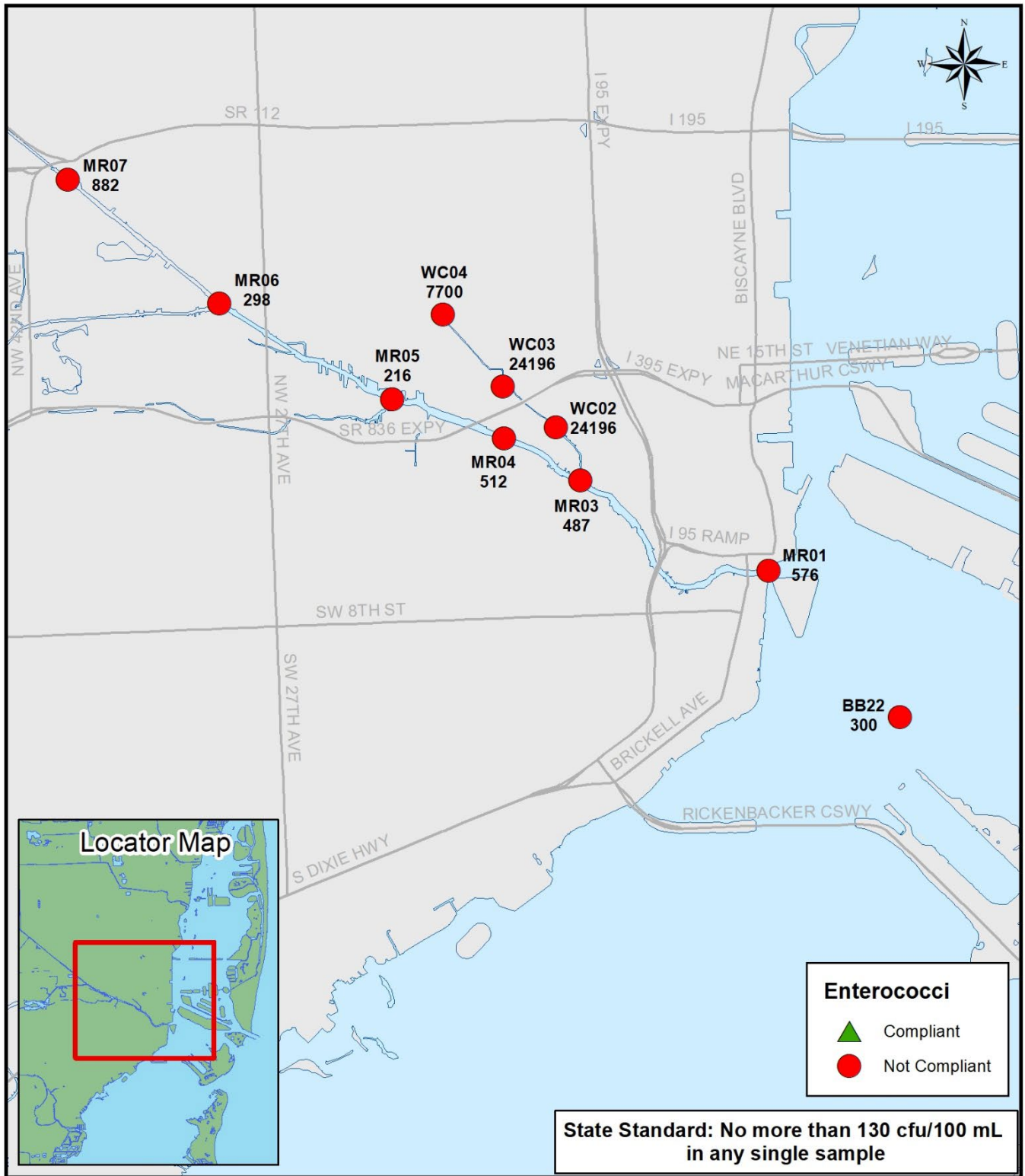
E-mail pamela.sweeney@miamidade.gov
juliet.ruggiero@miamidade.gov

Action Item Status:

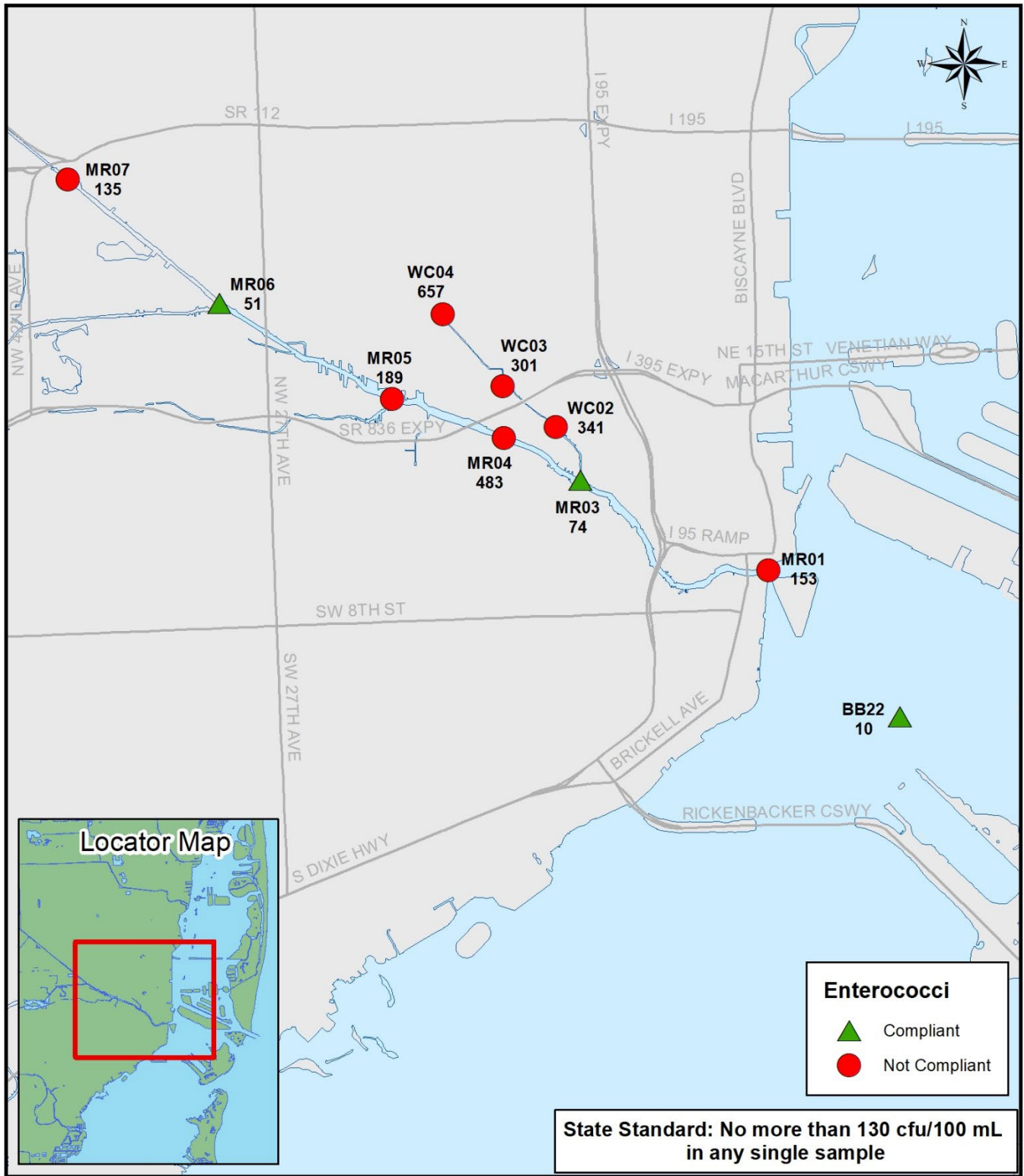
Miami-Dade DERM has continued to collect monthly water quality samples in the Miami River and its tributaries (including Tamiami Canal, Comfort Canal and Wagner Creek). Due to the time it takes for analytical laboratories to provide results, and additional time for data Quality Assurance/Quality Control (QA/QC), the County can only report on the previous quarter's results. During the First Quarter of 2025 samples were collected at each of the ten (10) stations in the river and tributaries on the second Tuesday of the month in October, and the first Tuesday of the month in November and December. Costs for sampling (including salaries and fringe and analysis) have been calculated at approximately \$394 per station per month. No sewage spills were reported on or around the Miami River or its tributaries during the quarter.

The Florida Department of Environmental Protection (FDEP) revised the human health-based surface water quality criteria in Chapter 62-302, F.A.C that are designed to ensure that Floridians can safely eat Florida fish and drink local tap water. Figures 1 -3 below depict where monthly results for stations in the Miami River and the vicinity exceed the single sample standard of 130 cfu/100 mL for Enterococcus—the applicable indicator for saline locations. Figure 4 is a quarterly composite of Enterococci results from station locations on the Miami River and its tributaries showing how frequently the results at each station exceeded the standard during the First Quarter of the year. Table 1 lists the observed Enterococcus values, as well as *E. coli* levels, in Wagner Creek and its confluence with the Miami River (MR03) for October-December.

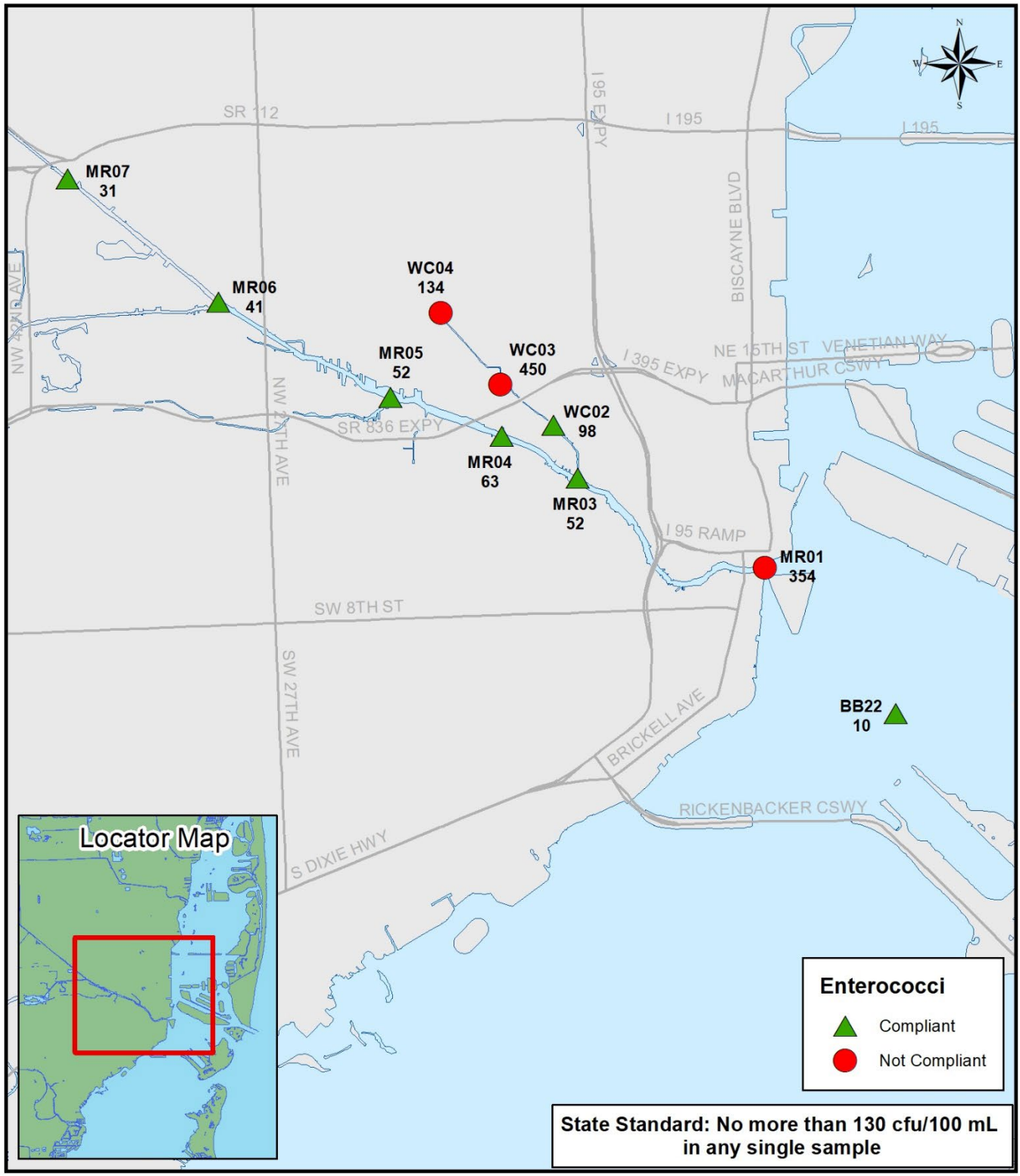
**Biscayne Bay Surface Water Quality Monitoring Program
Enterococci Bacteria Sample Compliance
October 2024
Miami River and Tributaries**



**Biscayne Bay Surface Water Quality Monitoring Program
 Enterococci Bacteria Sample Compliance
 November 2024
 Miami River and Tributaries**



**Biscayne Bay Surface Water Quality Monitoring Program
 Enterococci Bacteria Sample Compliance
 December 2024
 Miami River and Tributaries**



**Biscayne Bay Surface Water Quality Monitoring Program
 Quarterly Summary of Enterococci Bacteria Sample Compliance
 October to December 2024
 Miami River and Tributaries**

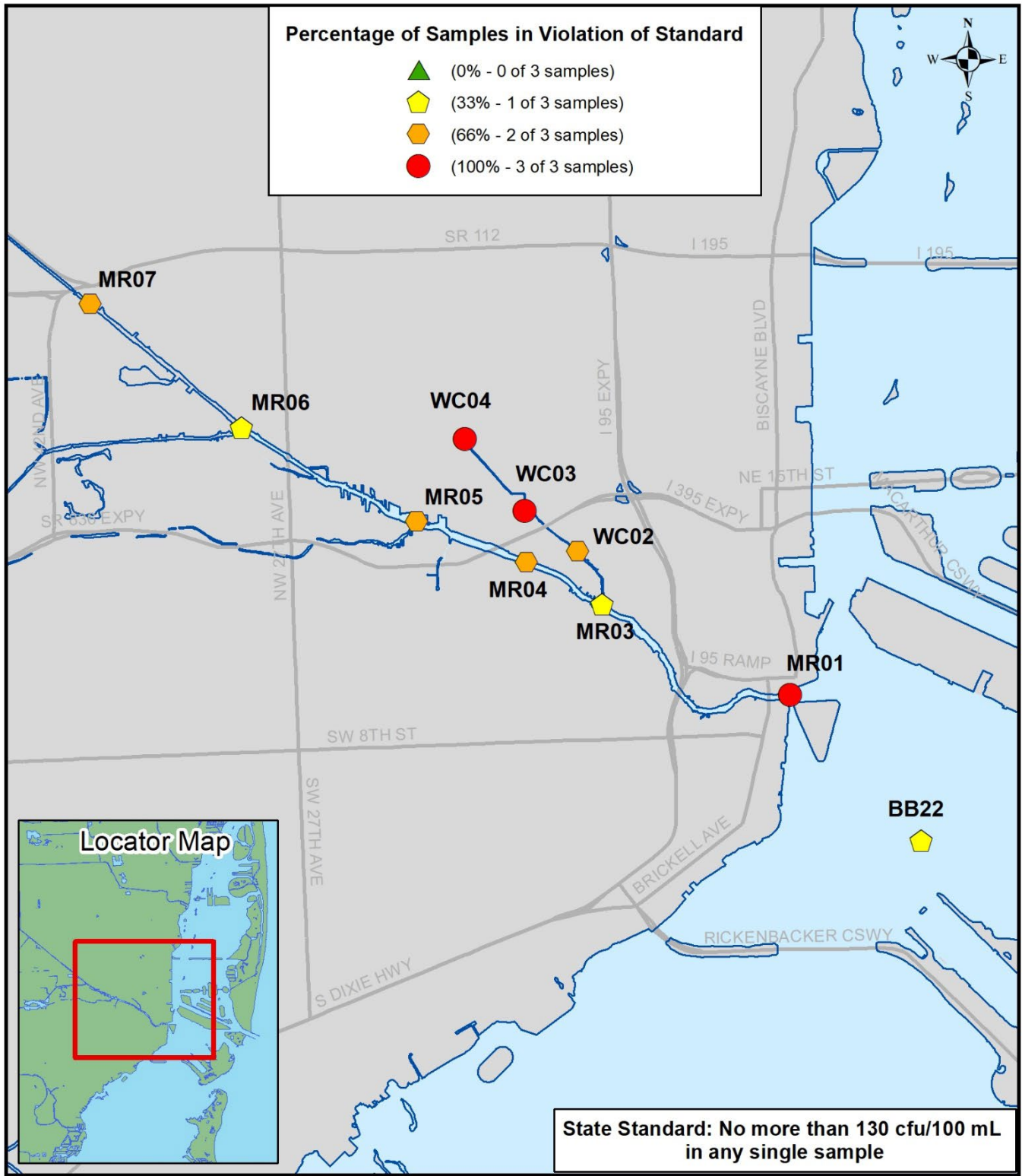


Table 1.

MONTHLY INDICATOR BACTERIA LEVELS (cfu's/100 mL) IN WAGNER CREEK

	MR03		WC02		WC03		WC04	
Parameter	Entero	<i>E. coli</i>	Entero	<i>E. coli</i>	Entero	<i>E. coli</i>	Entero	<i>E. coli</i>
October	487*	546*	24196*	24196*	24196*	48400*	7700*	3970*
November	74	336	341*	426*	301*	305	657*	990*
December	52	171	98	368	450*	426*	134*	305

A "*" indicates results that exceed the State's *E. coli* Standard (410 cfu/100 mL) or Enterococci (130 cfu/100 mL); a "0" indicates that the true value was below the method detection limit.

“MIAMI RIVER BASIN WATER QUALITY IMPROVEMENT REPORT”

Action Item Matrix Progress Report

Ammonia Nitrogen Tracking

Ten Year Period: 2014-2024

Lower Miami River

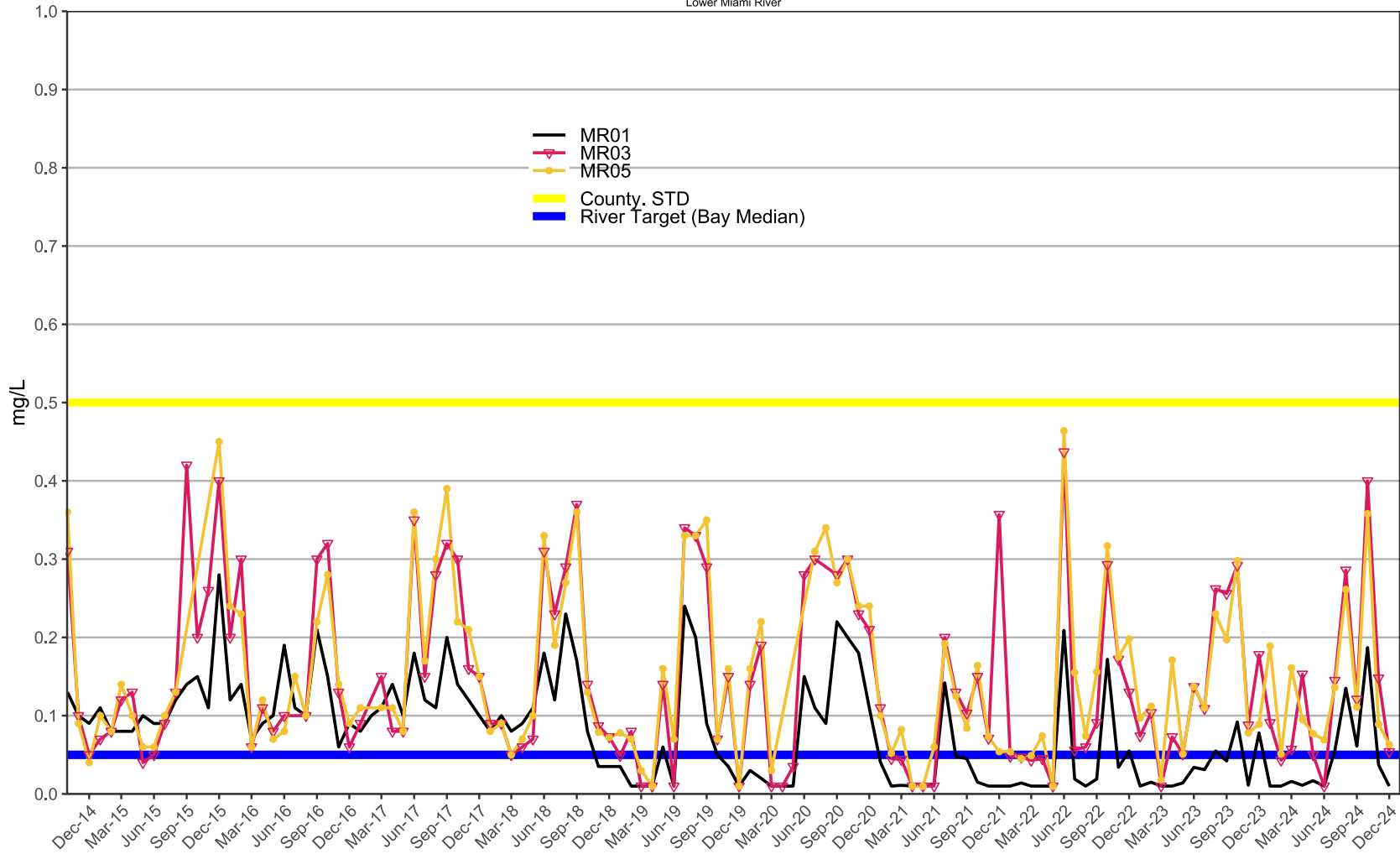


Chart 1

Ammonia Nitrogen Tracking

Ten Year Period: 2014-2024

Upper Miami River

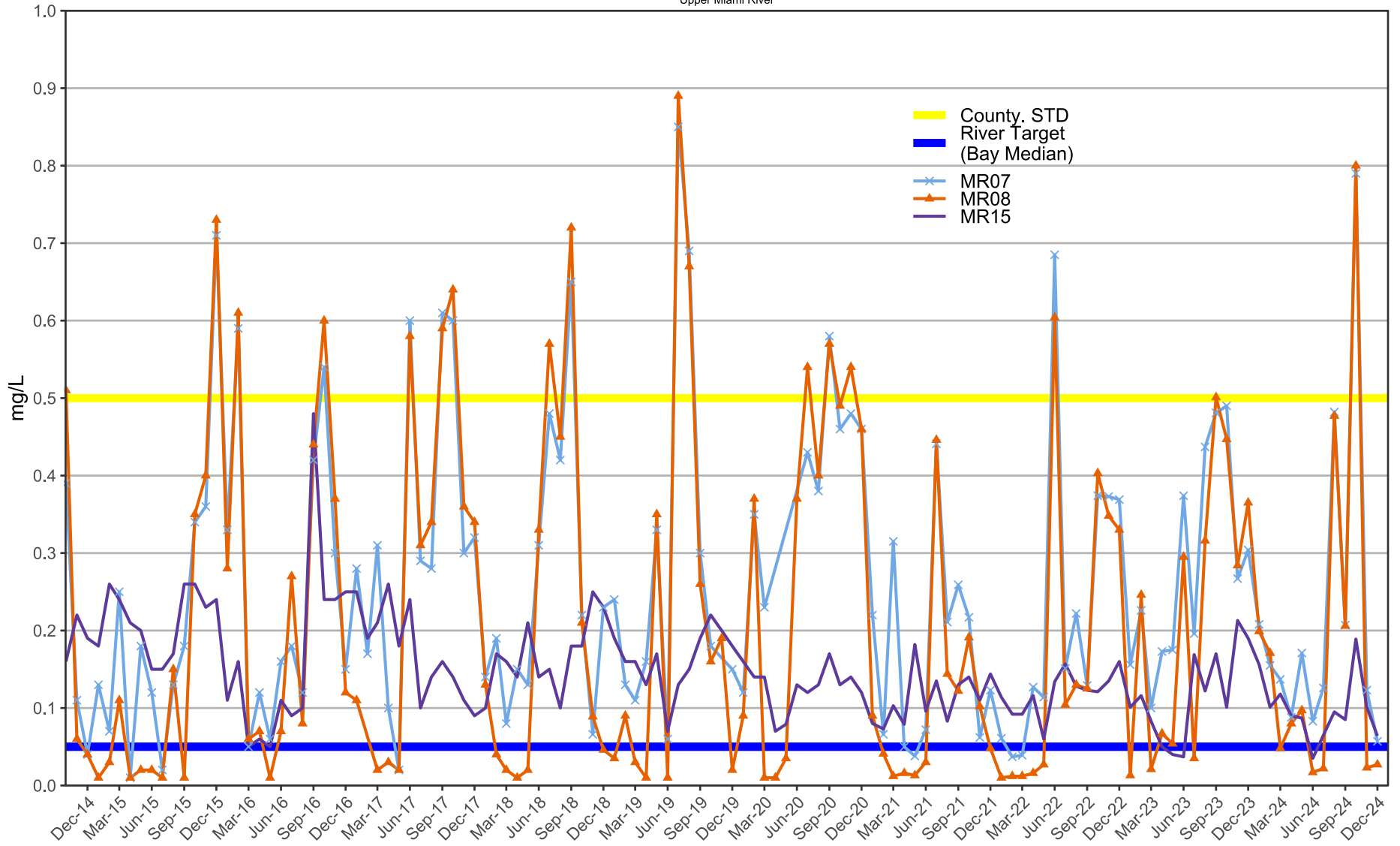


Chart 2

Ammonia Nitrogen Tracking

Ten Year Period: 2014-2024

Wagner Creek

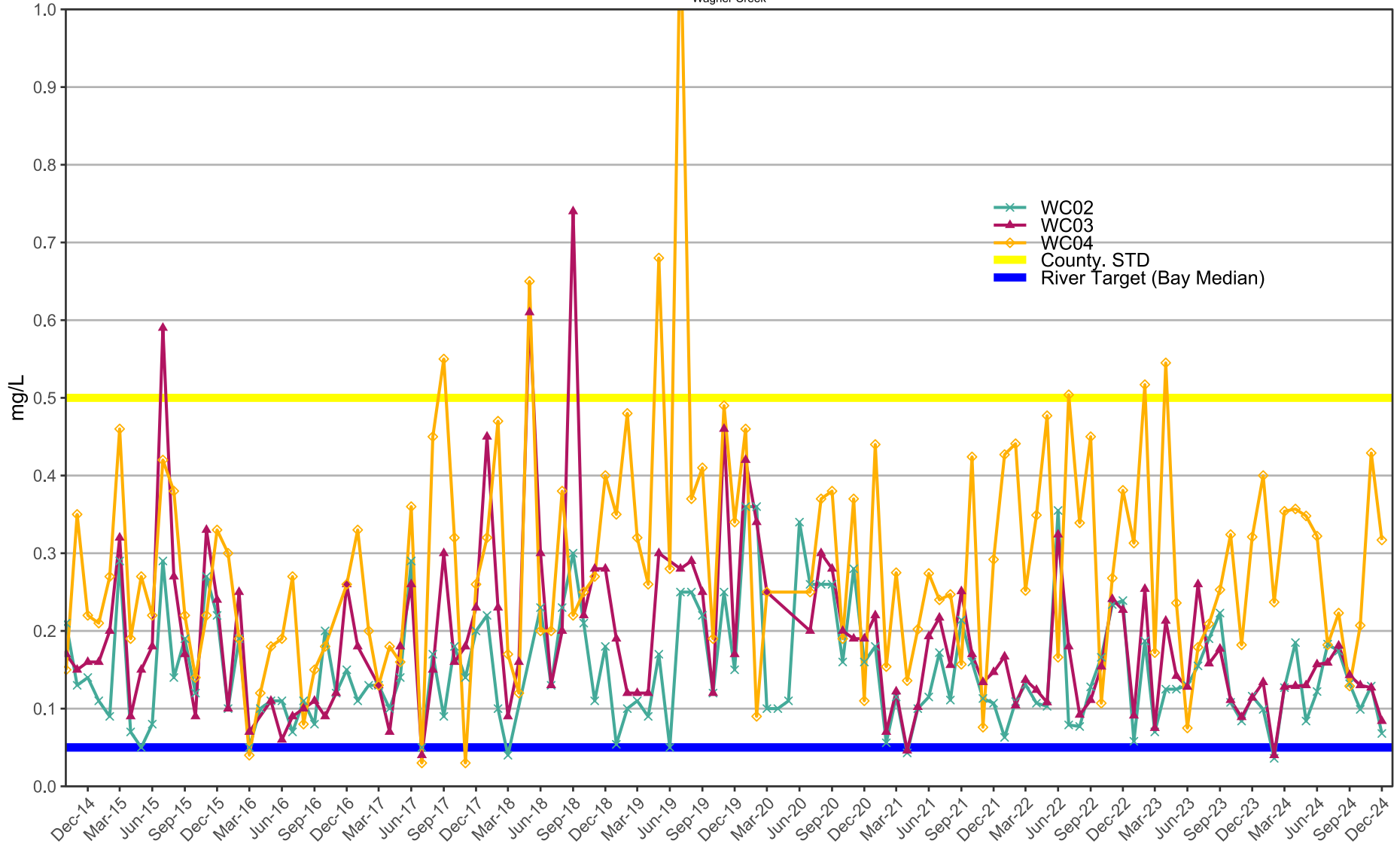


Chart 3

Total Phosphate Tracking

Ten Year Period: 2014-2024

Lower Miami River

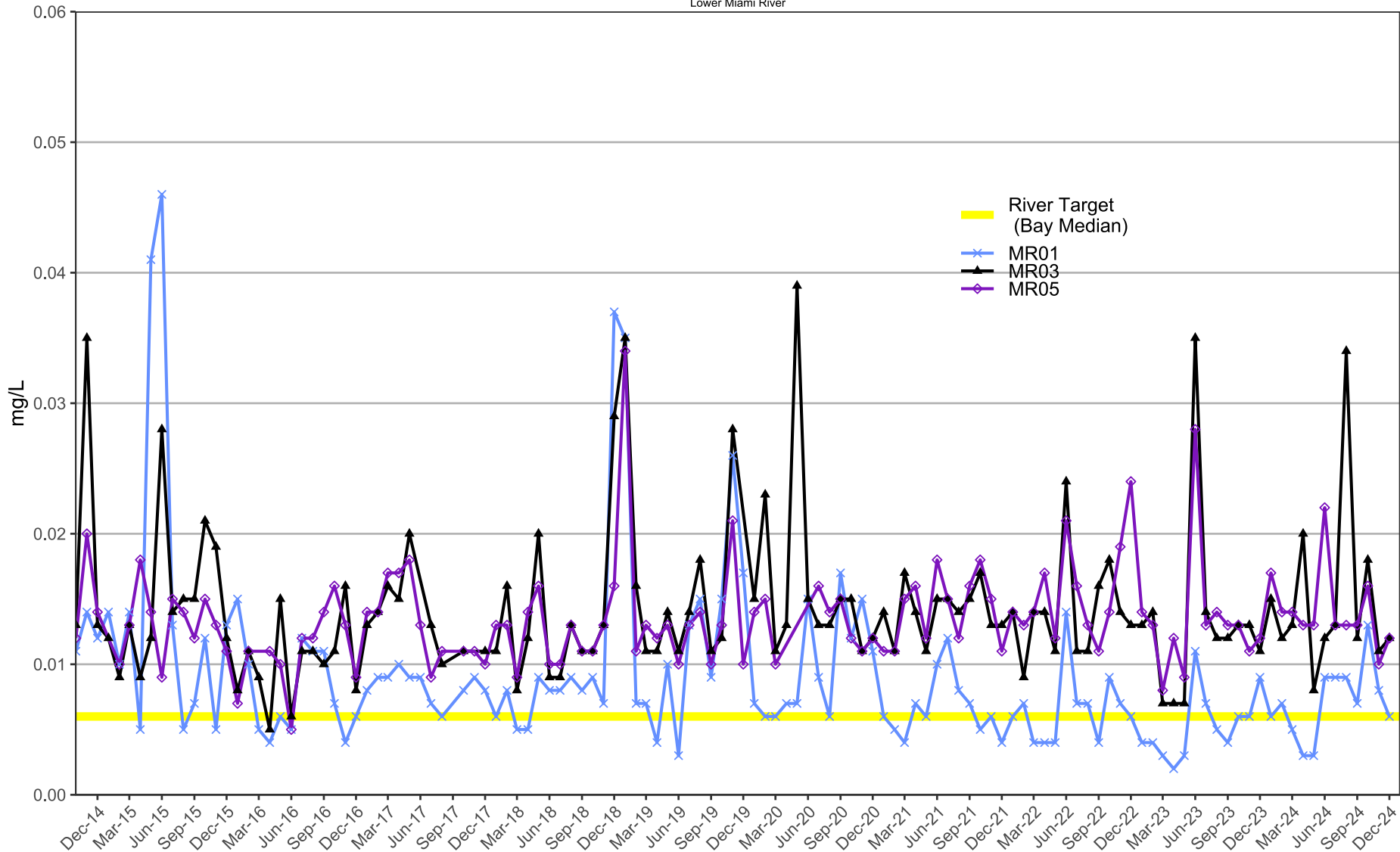


Chart 4

Total Phosphate Tracking

Ten Year Period: 2014-2024

Upper Miami River

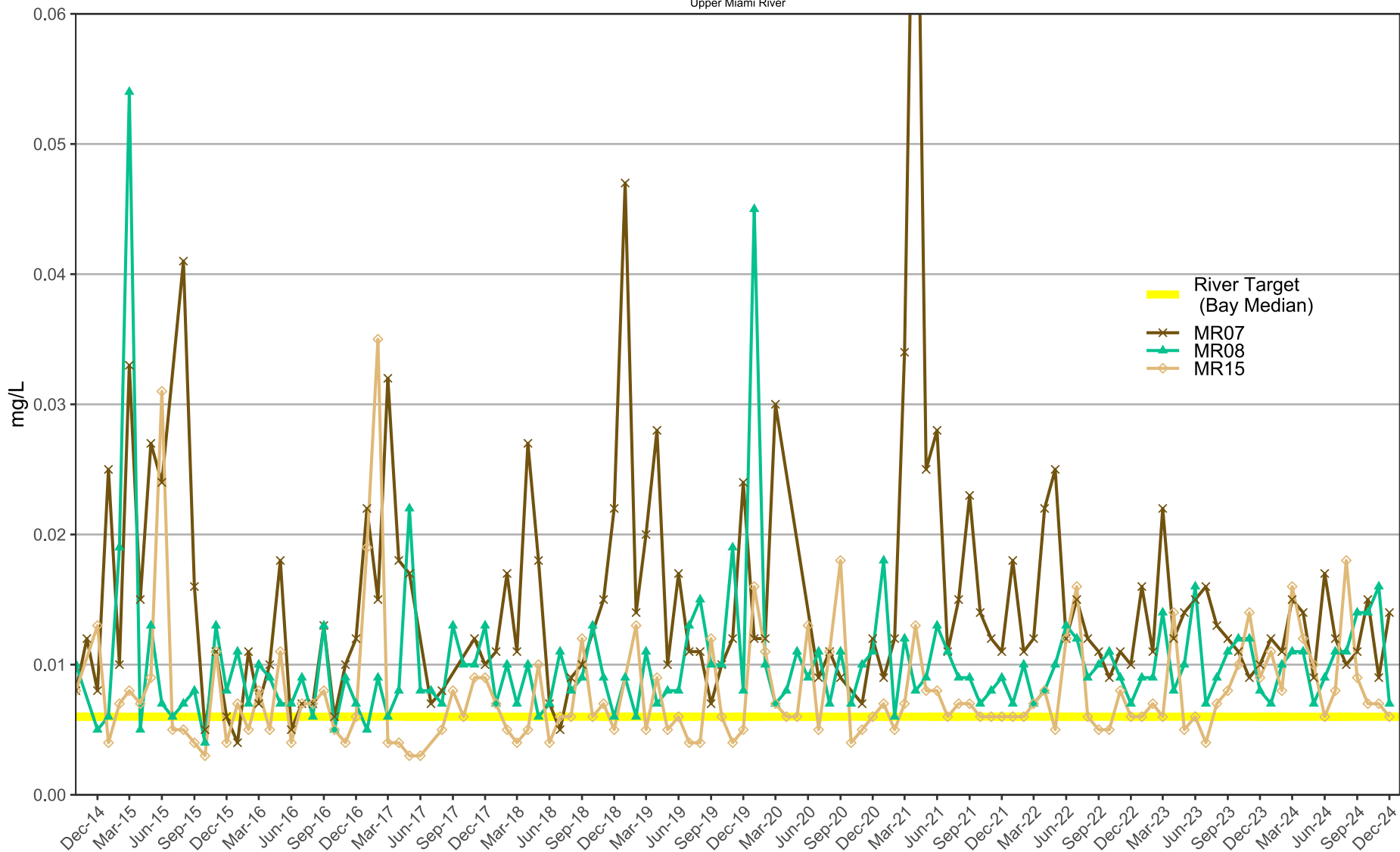


Chart 5

Total Phosphate Tracking

Ten Year Period: 2014-2024

Wagner Creek

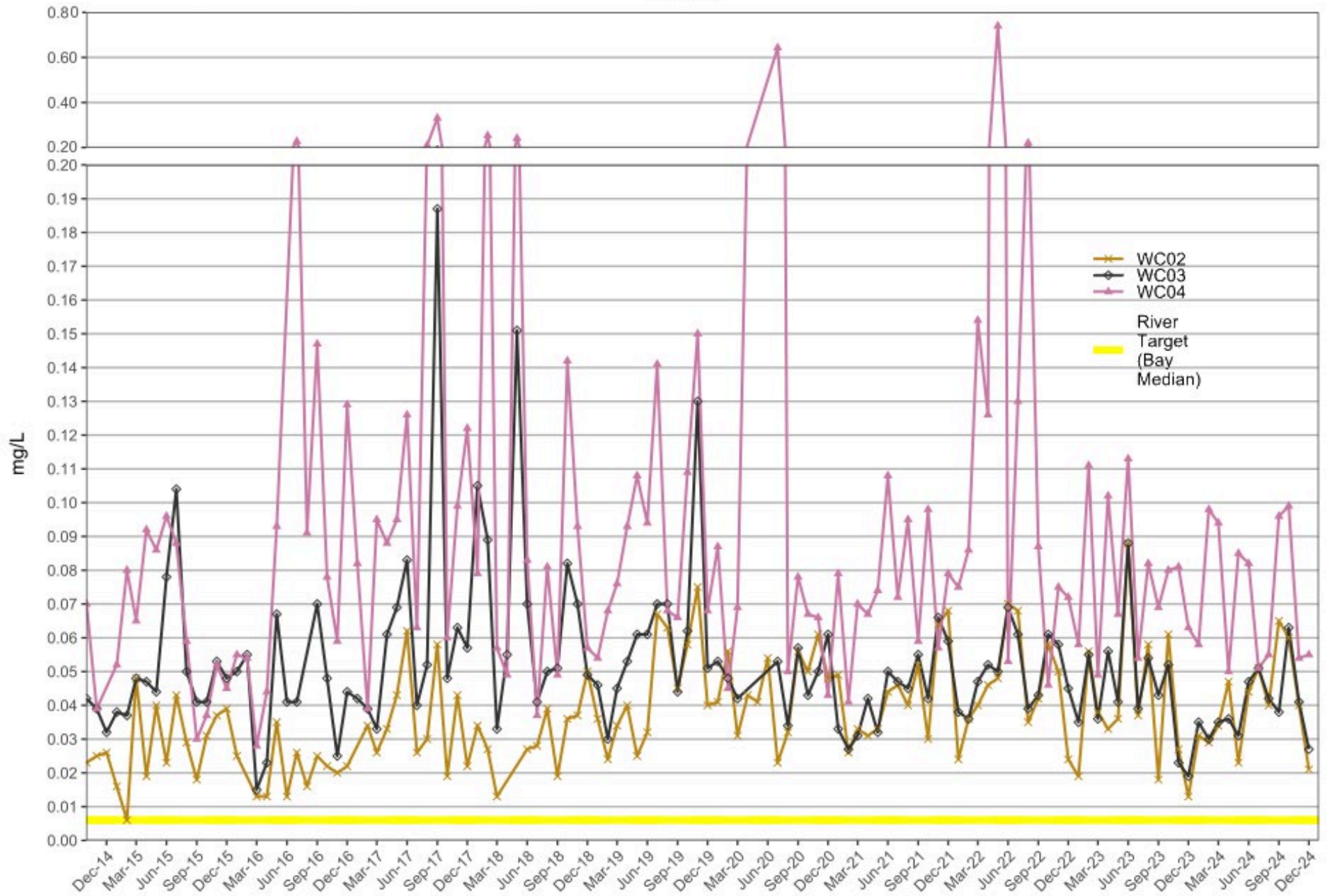


Chart 6

Enterococci Tracking

Lower Miami River

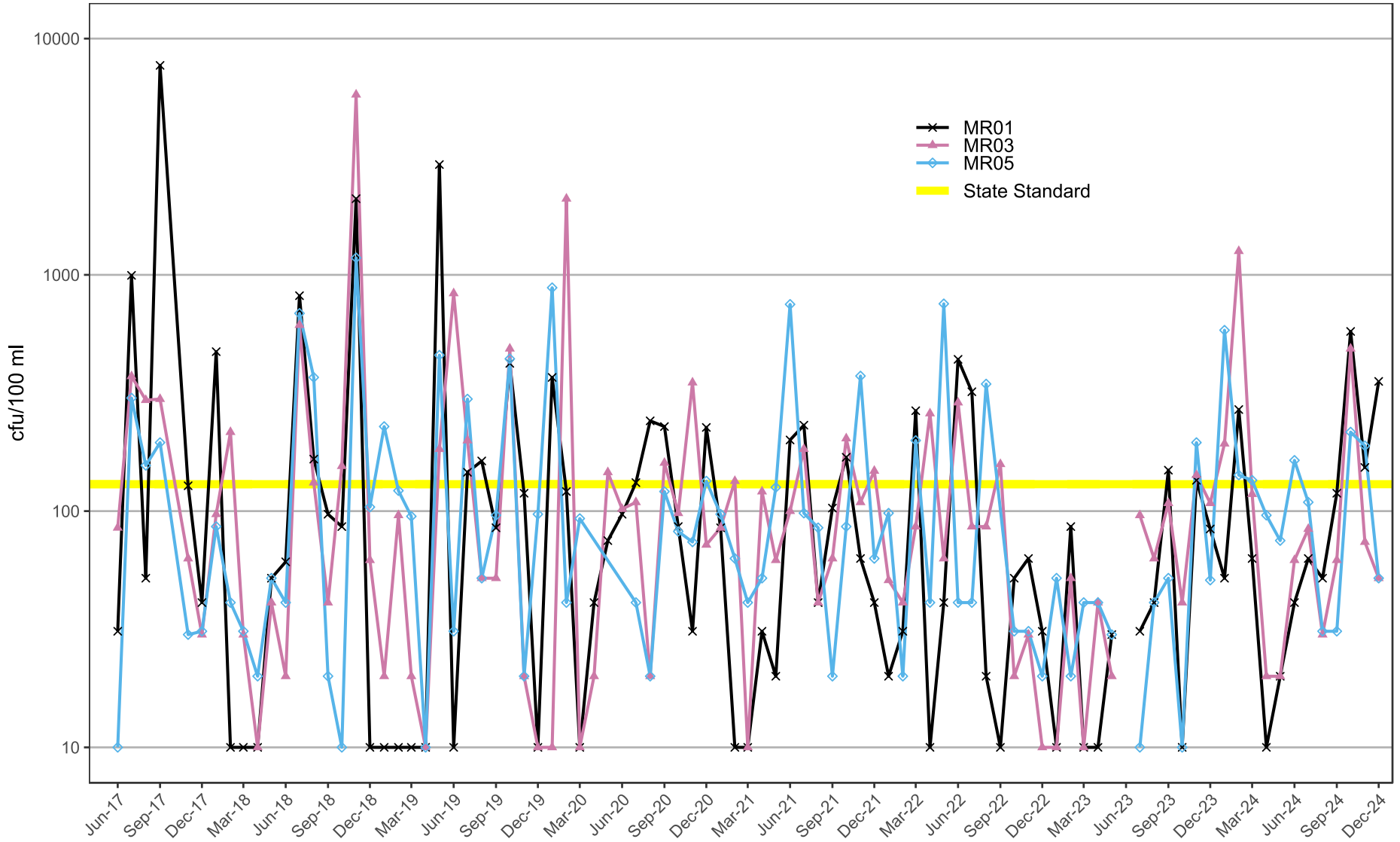


Chart 7

Enterococci Tracking

Wagner Creek

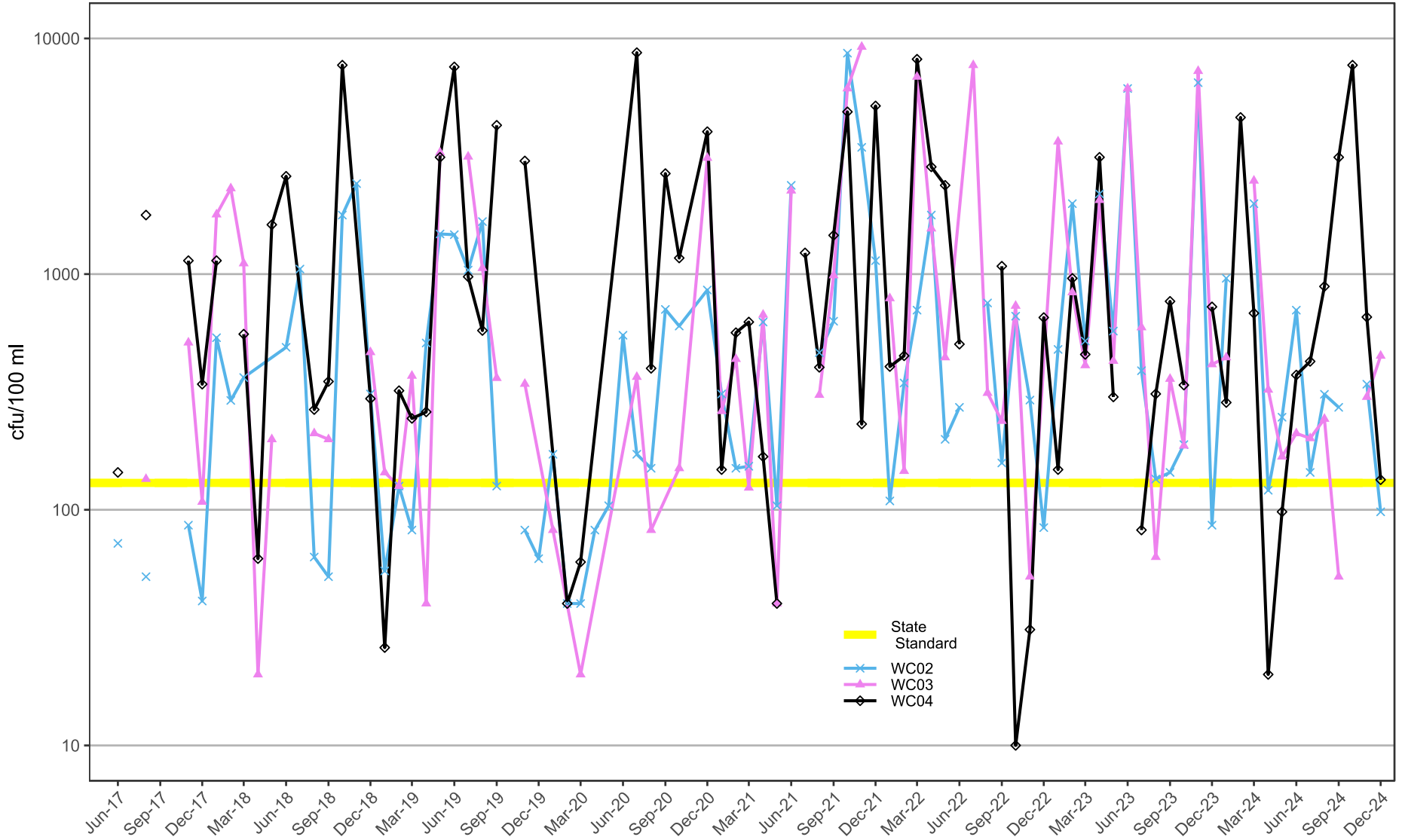


Chart 8

E. coli Tracking

Lower Miami River

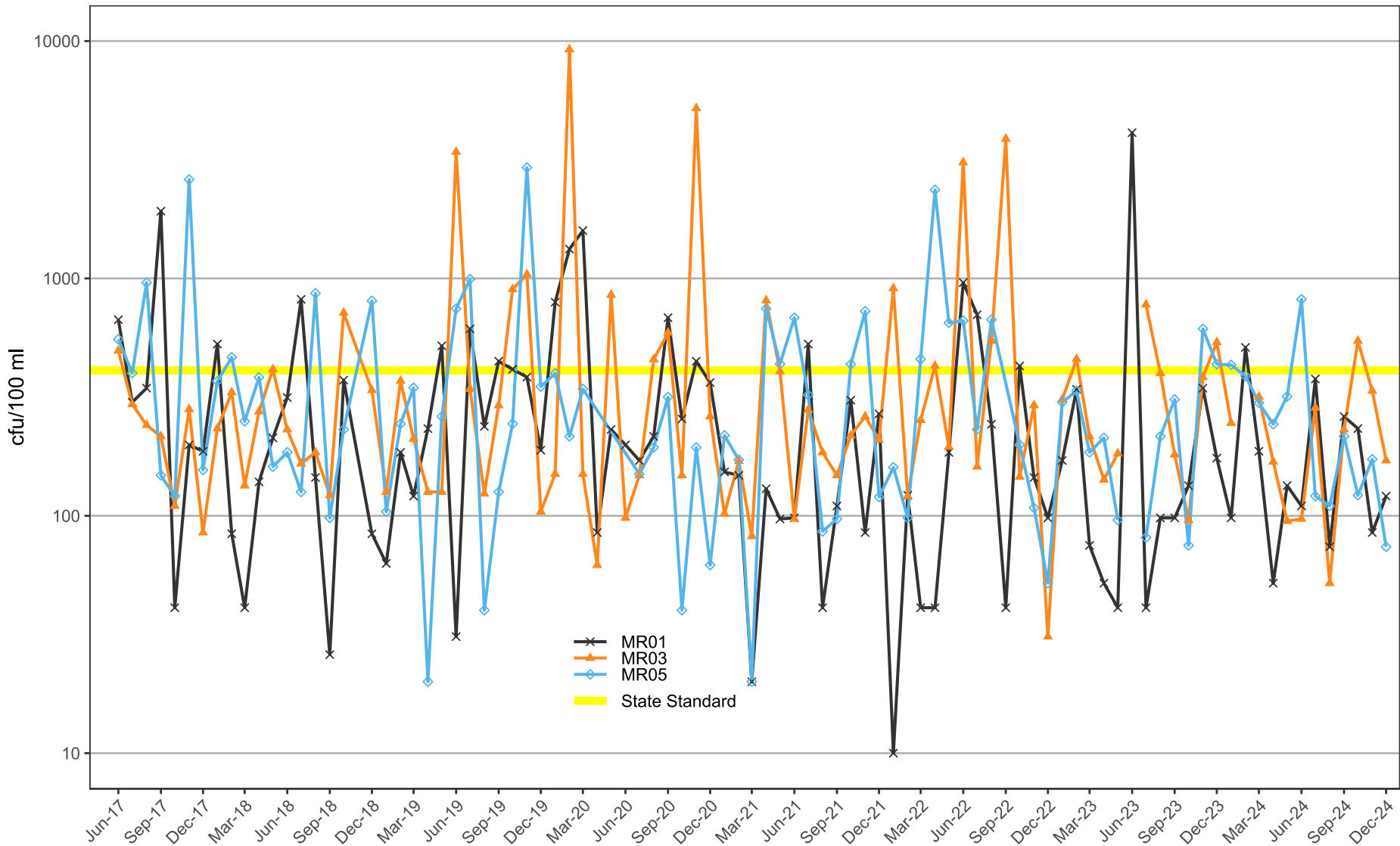


Chart 9

E. coli Tracking

Upper Miami River

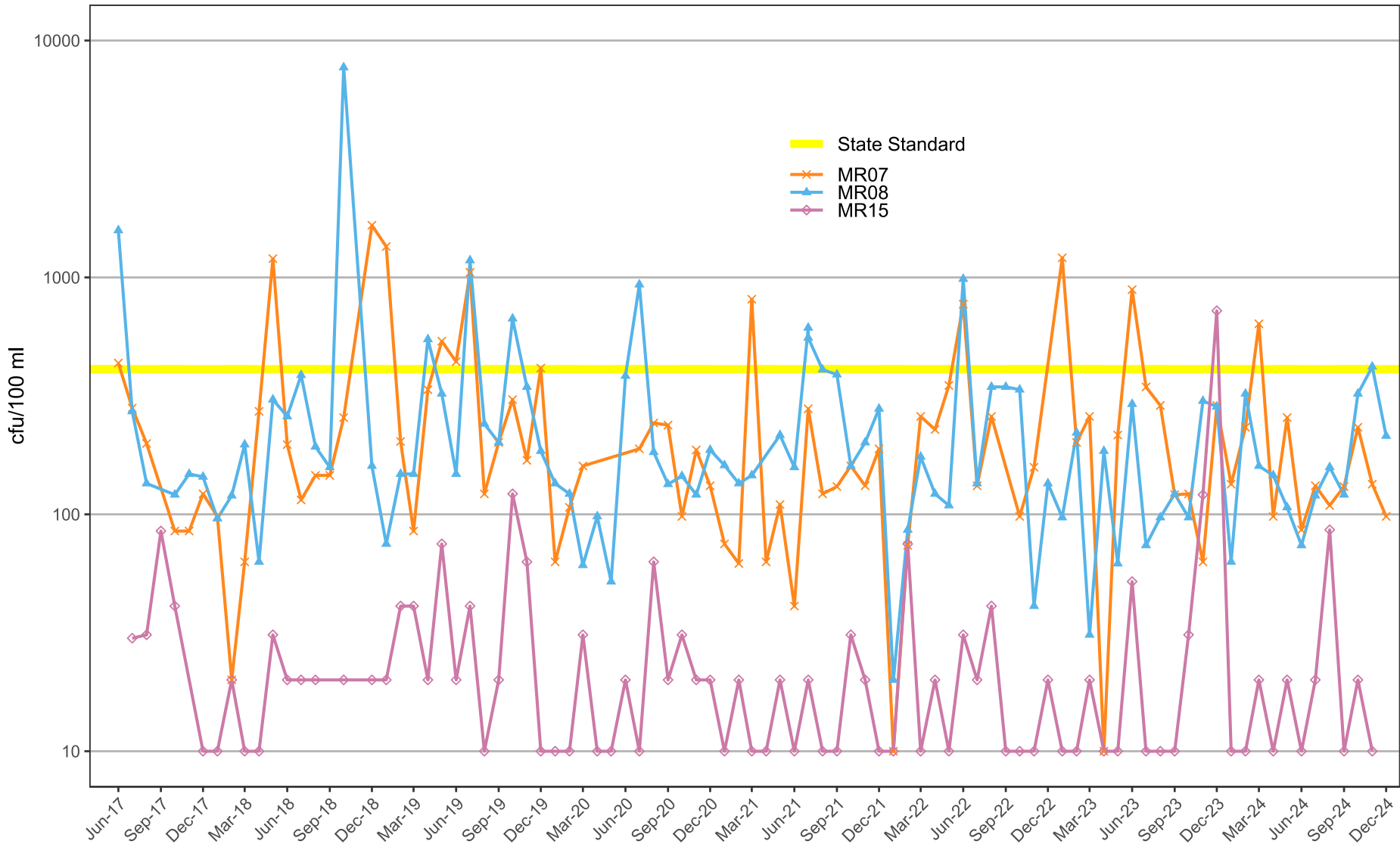


Chart 10

E. coli Tracking

Wagner Creek

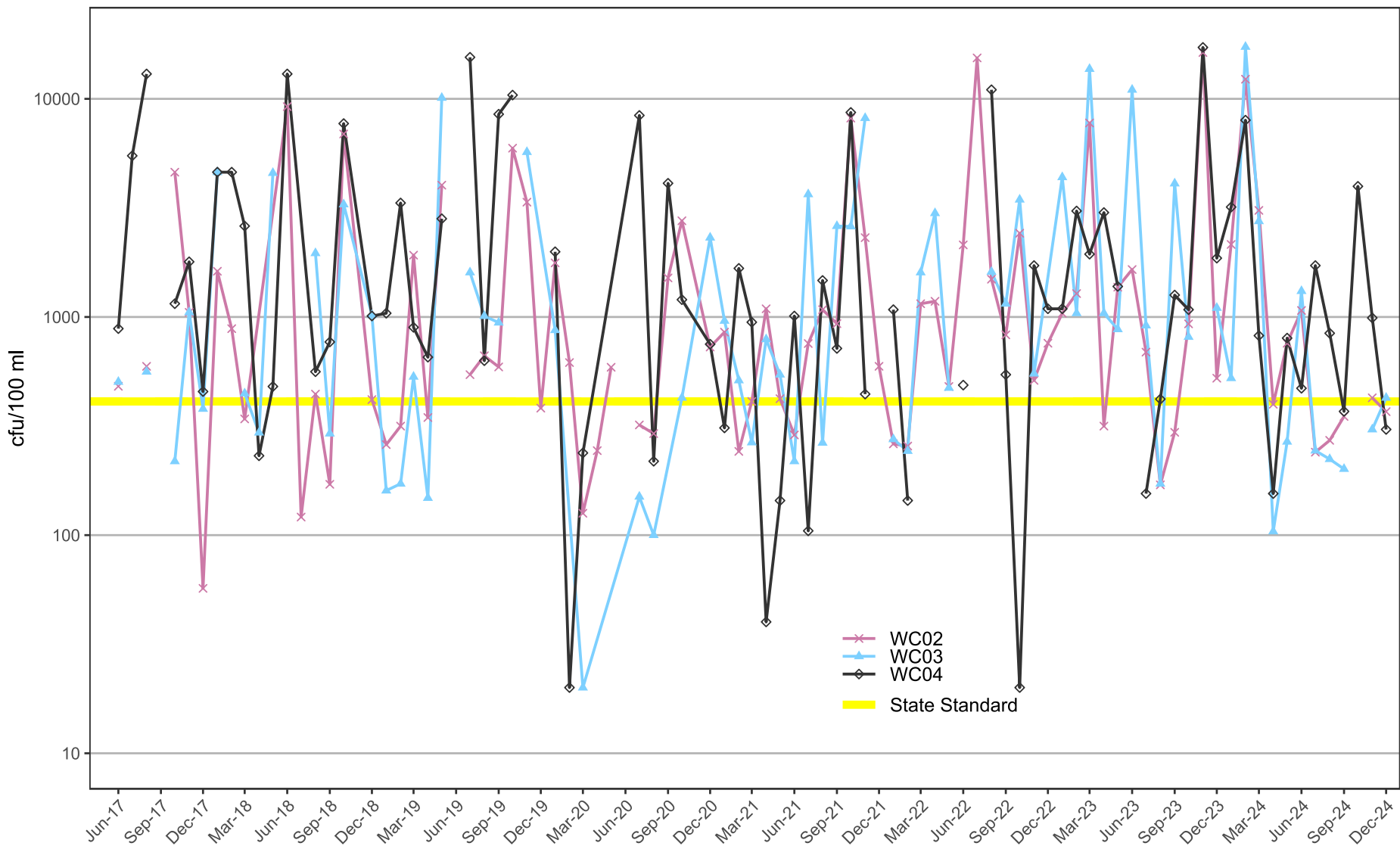


Chart 11

Turbidity Tracking

Ten Year Period: 2014-2024

Lower Miami River

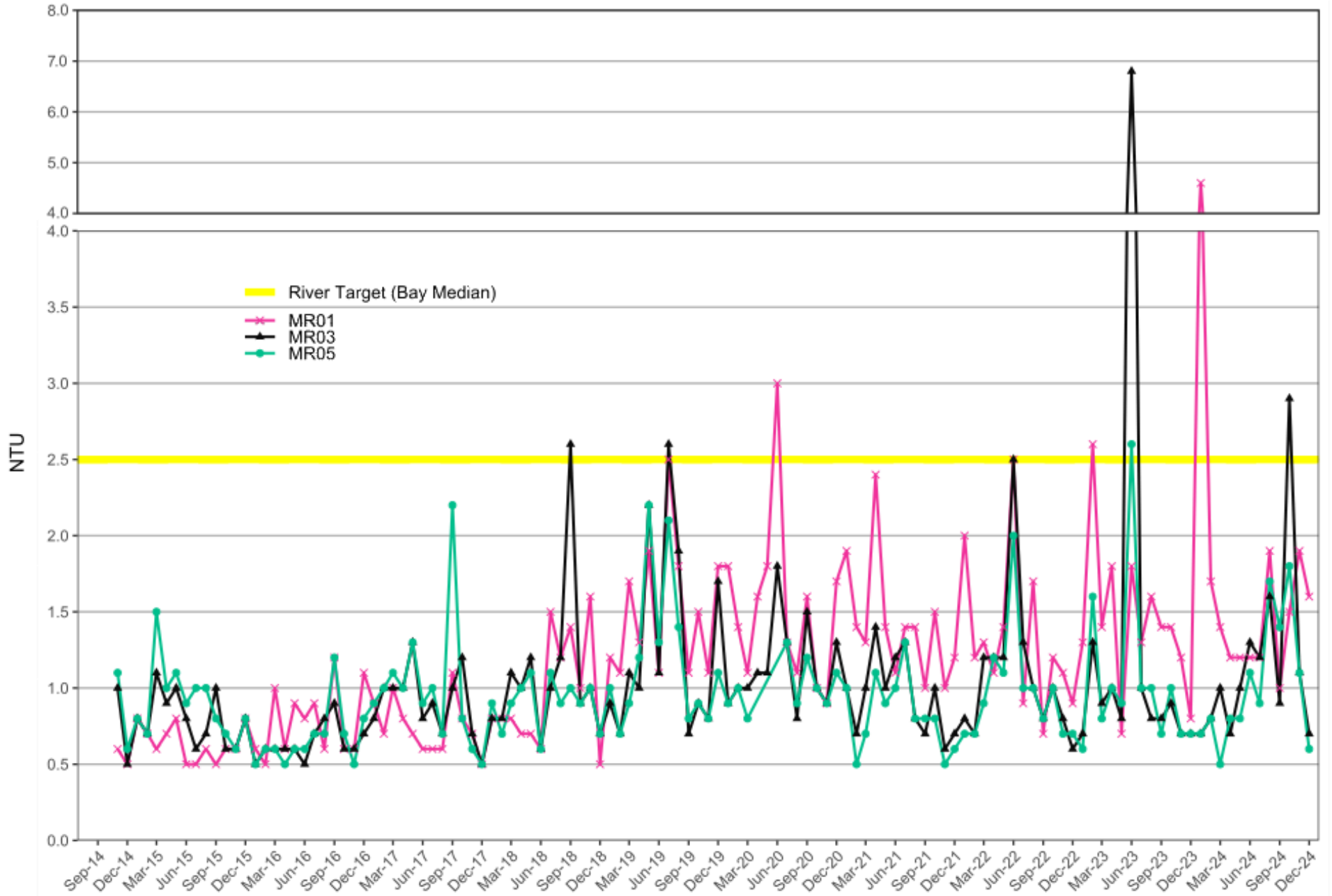


Chart 12

Turbidity Tracking

Ten Year Period: 2014-2024

Upper Miami River

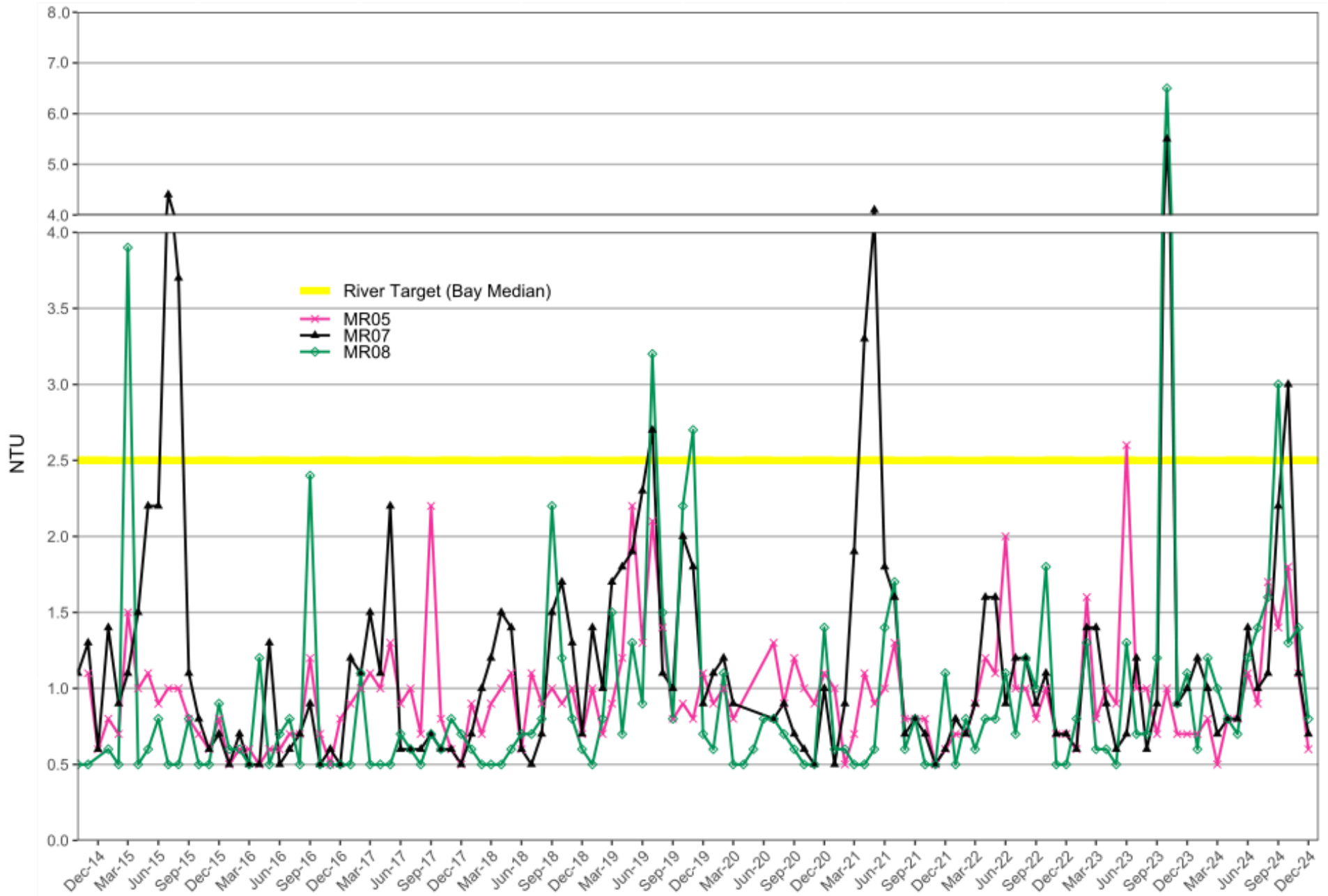


Chart 13

Turbidity Tracking

Ten Year Period: 2014-2024
Wagner Creek

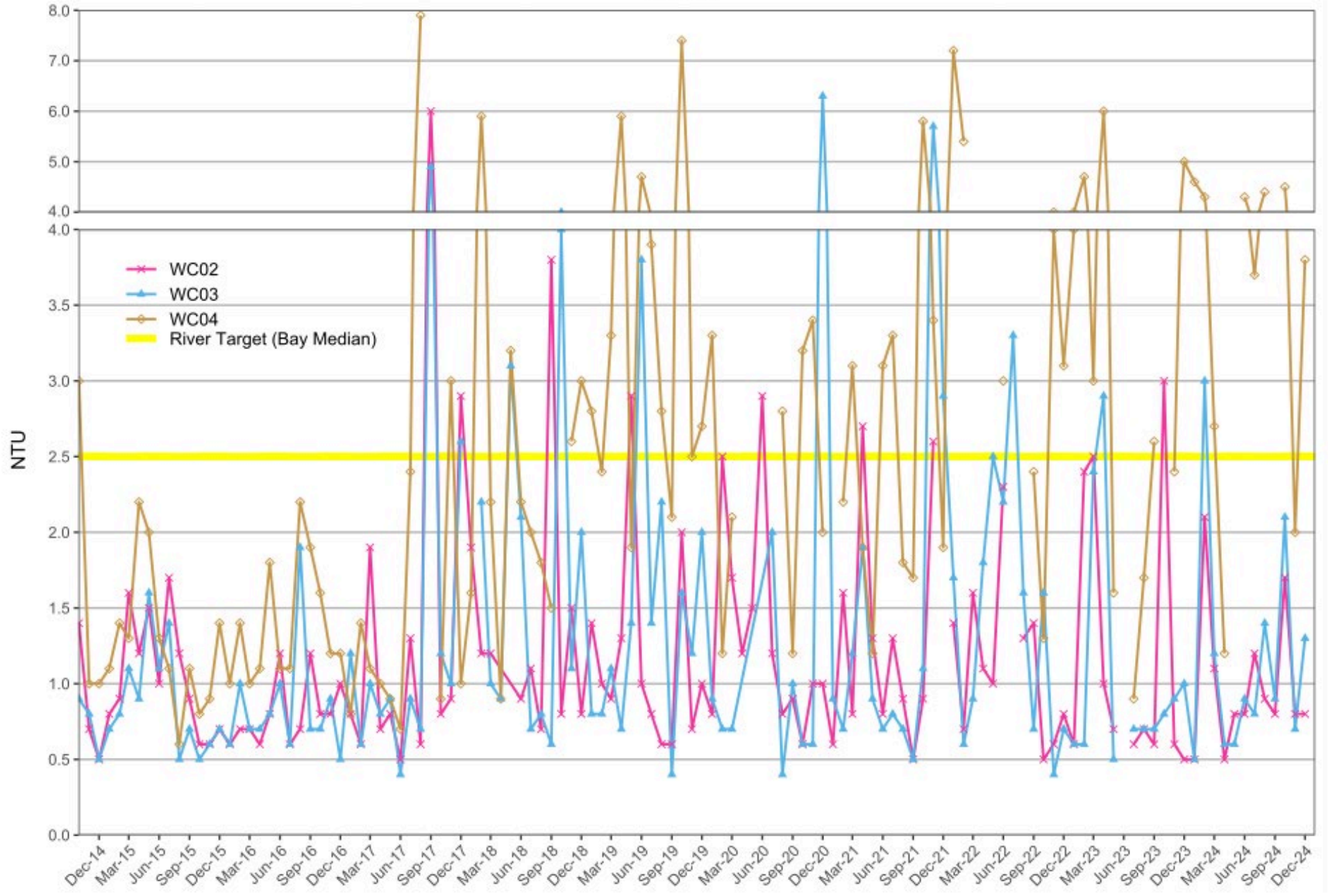


Chart 14